

Your partner of choice in maritime supply chain solutions

- Euroports is one of continental Europe's largest port operators.
- Through us travel about 46 million tons of goods, with the largest part being single items and bulk goods.
- We have 22 port terminals in Europe and 3 in China.
- In addition we operate 10 terminals on behalf of our customers.
- Our turnover in 2015 was 550 million Euros and we employ 2,550 professionals throughout different parts of the world.



Through us pass **46 millions** tons of cargo annually

Euroports is an international group, offering transport and logistics solutions.

Our core service package includes terminals, transport services, freight forwarding and contract logistics in a number of industries.

Our Customers come from a broad spectrum of industries.

Rauma

- Finland's largest paper exporting port
- Western Finland's largest container port
- The main commodities: chemical and mechanical forestry industrial products, containers, bulk and project transportation

Rauma and Pietarsaari

- Exports and imports of about 6 million tonnes
- Container traffic 300,000 TEU
- Personnel 600
- Draft 12 meters (Rauma) and 10.5 meters (Pietarsaari)
- Certified: ISO 9001, ISO 14 001, OHSAS 18 001 and AEO

Storage area nearly **270,000 m²**

Euroports Rauma
Hakunintie 23 • FI-26100 • tel. +358 2 83 121



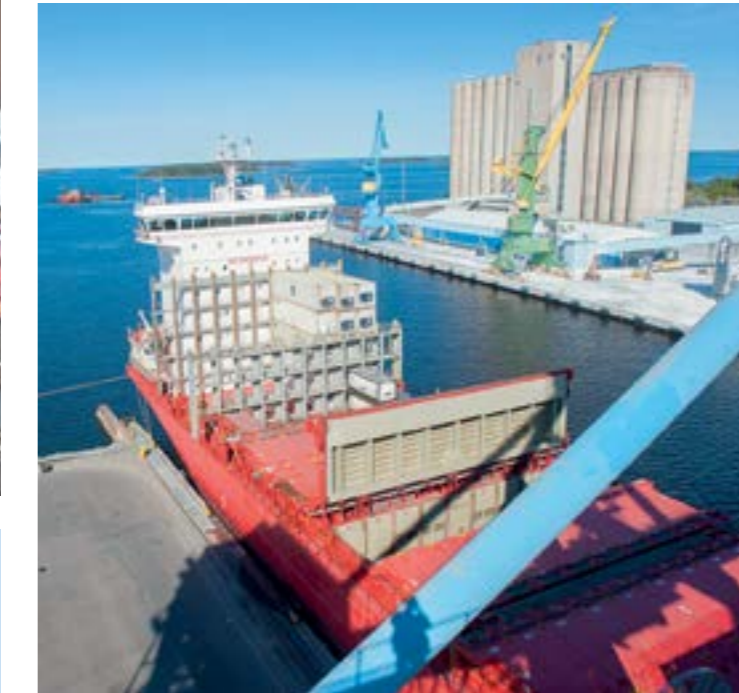
All the operating services you need at a port

You get throughout all of our ports professional operator services: cargo handling, storage,

With our export services we have special expertise in the chemical and mechanical forestry industrial products. In addition, we deal with the forwarding of containers, trailers, general cargo, bulk and a different machine and project goods, with all the actions associated with forwarding.

Our import services cover and include transport, freight forwarding, customs clearance and storage services. In addition to normal general cargo and large single unit cargo storage, we can offer modern warehouses classified to (IMDG) for the storage of goods as well as customs terminal and customs warehouse services.

Good road links, versatile crane capacity and skilled personnel has rewarded our port operations and projects to be the number one transportation specialist.



freight forwarding, shipping services, international transportation and customs warehouse services.

Please read below more of the specialist services and expertise we can offer.

Shipping services that you get from us are all around the clock, the shipping agent can be reached 24/7. We represent more than 40 different shipping lines and our report each year is for than more than 1,000 vessels.

Storage services form our fourth strong area of expertise. We have a storage area with a total surface area of nearly 270,000 sq m, of which is heated about 30,000 sq m. For silo type storage facilities, it is about 200,000 sq m and for containers 6,500 TEU places. Cargos that are classified (IMDG) we can offer separate storage facilities: outdoor areas for 120 TEU-places and a heated storage facility of 1,050 sq m.
info@euroports.fi

Pietarsaari

- Significant saw timber export port
- The main commodities: saw timber, pulp, raw wood, coal and biofuel

Regularly around the world

We have regular lines through North Africa, American East Coast, Continental Europe and the UK, as well as from Continental Europe continuous onward connections worldwide.

Safely arriving to its destination

Safety is a key factor for us. We take care that our customers' shipments pass through safely, and that the operating environment for our staff is safe. Rauma was chosen as Finland's safest port in 2015.

Draft up to **12 meters**

Euroports Pietarsaari
Laukkovägen 3 • FI-68600 • tel. +358 6 781 3600

“ We will make our Customers successful.

” At your service 600 professionals in Finland and 2,550 throughout the world

Through us access to the whole world



OUR MISSION

As the partner of choice in maritime supply chain solutions

- We will be a financially sound and secure partner and employer
- We will make our Customers successful by providing them with an international network of asset based solutions that create a sustainable competitive advantage
- We will provide our Employees with
 - A safe and secure working environment
 - Domestic and international career opportunities
 - A professional and ambitious working environment
- We will provide sustainable economic growth in a responsible manner

OUR VALUES

AT EUROPORTS WE LIVE AND WORK BY 5 CORE VALUES:

- Passion for performance
- Successful Customer Relationships
- Respect for people
- Act with integrity
- Teamwork

OPERATIONS:

- Port operations
- Terminal operations
- Transportation
- Forwarding
- Contract logistics

Through us you get all services in port operating:

- Cargo handling
- Storage
- Forwarding
- Shipping Services
- International shipments
- Customs warehouse services

2007: We became part of the International Euroports Group

2012: We bought the Port of Rauma crane operations

2013: Rauma Stevedoring and Botnia Shipping merged into Euroports Finland Oy

2016: We are one of Finland's most significant port operators

IN FINLAND EUROPORTS is a full-service port operator. We operate globally through our parent company Euroports Group.

IN RAUMA AND IN PIETARSARI we employ 600 professionals. Our services cover all transportation related services.